

FULL CONDUCTOR SCORE
Catalog No: 011-4786-01

A HOLIDAY SMASH-UP

Jonathan McBride

GRADE:
2.5

BARNHOUSE COMMAND SERIES

For Concert Band



MUSIC PUBLISHERS SINCE 1886
THE BARNHOUSE
COMPANY

A HOLIDAY SMASH-UP

Jonathan McBride

Instrumentation

Full Conductor Score	1	F Horn	4
Flute	10	Trombone	6
Oboe	2	Baritone B.C.	2
1st B ^b Clarinet	5	Baritone T.C.	2
2nd B ^b Clarinet	5	Tuba	4
B ^b Bass Clarinet	2	Mallet Percussion 1: Bells	2
Bassoon	2	Mallet Percussion 2: Chimes	1
E ^b Alto Saxophone	6	Timpani	1
B ^b Tenor Saxophone	2	Percussion 1: Snare Drum, Bass Drum	3
E ^b Baritone Saxophone	2	Percussion 2: Suspended Cymbal, Crash Cymbals	2
1st B ^b Trumpet	5	Percussion 3: Triangle, Sleigh Bells	2
2nd B ^b Trumpet	5		

Program Notes

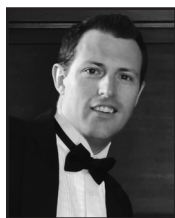
What starts out as a holiday fanfare quickly devolves into argument and confusion between sections of the band! Woodwinds insist on playing “Jingle Bells,” but the brass respond with “O Christmas Tree.” To add to the confusion, different instruments wander off to join in with bits of other familiar holiday songs. Eventually, everyone finally finds their way back together for a triumphant finale!

Rehearsal Suggestions

A Holiday Smash-Up is full of unexpected themes and style changes making up “musical jokes” within the piece. Let your students in on these jokes, as they will be more eager to play the marked dynamics, tempo changes, and articulations after understanding the humor intended. Examples include: the sudden dynamic changes in m. 27 and 28; the swing-style supported by the articulations in m. 42; the loud roll-off followed by soft staccato woodwinds at m. 48; the low instruments introducing the end of “The Twelve Days of Christmas” in m. 63. The more exaggerated these musical elements are, the more entertaining the effect.

I truly hope you find **A Holiday Smash-Up** humorous, educational, and enjoyable. *Jonathan McBride*

About the Composer

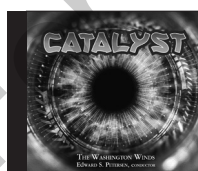


After Graduating from high school in Nome, Alaska and from the University of Alaska, Anchorage with a degree in music education, **Jonathan McBride** went on to teach multiple levels of both band and choir in Alaska for 9 years. Jonathan currently teaches K-12 band, choir, and general music in the small town of Pateros, Washington.

In 2010 Jonathan earned his master’s degree in instrumental conducting from the American Band College, and became a National Board Certified Teacher in Instrument Music. Jonathan is a consistent presenter at Washington’s State Music Education Conference, and his bands have been featured performers at both the Alaska and Washington conferences. In addition to teaching and composing, Jonathan McBride enjoys working as a guest director and adjudicator, and also directs the Okanogan Valley Chorus.

Jonathan’s compositions have been performed by various bands and choirs at honor and mass festivals, as well as regional contests, and are considered favorites for both students and audiences.

New Young Band CDs

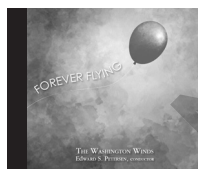


WFR398

CATALYST

The Washington Winds, Edward S. Petersen – Conductor

CONTENTS: Celebration Fanfare (Reincke/arr. Romeyn), To A New Journey (Wada), Swirling In The Light Bulbs (Sciaino), Catalyst (Romeyn), Petite Piece Concertante (Balay/arr. Glover), Maelstrom (Neeck), Petersburg Sleighride Galop (Eilenberg/arr. Glover), To Honor America (Swearingen), Among The Stars (Galvin), To Those Who Dream (Daehn), Dancing In The Rain (Jarvis), The Morning’s First Light (Shaffer), River Of Peril (Webb), Spring’s Awakening (Bell), With One Courageous Voice (Eastmond), Catapult! (Huckeby), A Fond Farewell (Susi), From Wales To Harlech (arr. Glover), Tornado Alley (Susi), Island Fiesta (C.T. Smith)



WFR399

FOREVER FLYING

The Washington Winds, Edward S. Petersen – Conductor

CONTENTS: Outrider (McBride), Voice Of America March (K. L. King/arr. Swearingen), Starship Legacy (Chattaway), Island Breezes (Huckeby), The Codebreakers (Budiansky), Nordic Adventure (Katheryn Fenske), Vanguard Fanfare (Romeyn), The Swashbucklers March (Romeyn), Evil Jungle Prince (Neeck), Hymn To St. Avold (C. T. Smith), The Horseman Of Sleepy Hollow (Romeyn), Dem Bones (Shaffer), Winds Of Joy (Weller), Red River Valley (arr. Glover), In Times Of Turbulence (R. W. Smith), Modal Song and Dance (del Borgo), Jambo, Raikiki! (Webb), Salute To Liberty (Swearingen), Windsong (Chattaway), Dress Blues (Hammonds), At The Water’s Edge (Romeyn), Skyward Bound (Swearingen), Rumble And Roar! (Neeck), Trans-America March (R. W. Smith), Forever Flying (Swearingen), Let’s Do This! (Benson), Ghost Host (Eveland), The King’s Crown (Romeyn), Challenge Accepted! (McBride), Danza Del Mambo (R. W. Smith), This Land Is Your Land (Guthrie/arr. A. Clark)

LICENSING THIS WORK

Visit barnhouse.com to obtain information on mechanical (recording) or derivative (arranging) licenses.

A HOLIDAY SMASH-UP

Conductor Score
011-4786-00

Jonathan McBride
ASCAP

Festively! (♩ = 126)

The score is for a conductor and includes parts for the following instruments:

- Flute
- Oboe
- 1st B♭ Clarinet
- 2nd B♭ Clarinet
- B♭ Bass Clarinet
- Bassoon
- E♭ Alto Saxophone
- B♭ Tenor Saxophone
- E♭ Baritone Saxophone
- 1st B♭ Trumpet
- 2nd B♭ Trumpet
- F Horn
- Trombone
- Baritone
- Tuba
- Mallet Percussion 1: Bells
- Mallet Percussion 2: Chimes
- Timpani B♭, E♭
- Percussion 1: Snare Drum, Bass Drum
- Percussion 2: Suspended Cymbal, Crash Cymbals
- Percussion 3: Triangle, Sleigh Bells

The score is in 4/4 time with a key signature of two flats (B♭ and E♭). The tempo is marked 'Festively!' with a quarter note equal to 126 beats per minute. Dynamics include *f*, *mf*, *f*, *mp*, and *ff*. A 'solo' marking is present for the sleigh bells in measure 7. A watermark 'For Reference Only! Not valid for performance.' is overlaid on the score.

8

Flute

Oboe

1st Clar.

2nd Clar.

B. Clar.

Bsn.

A. Sax.

T. Sax.

B. Sax.

8

1st Trpt.

2nd Trpt.

Horn

Trom.

Bar.

Tuba

Mlt. 1

Mlt. 2

Timp.

Perc. 1

Perc. 2

Perc. 3

Triangle

mf

8

9

10

11

12

13

14

16

Flute

Oboe

1st Clar.

2nd Clar.

B. Clar.

Bsn.

A. Sax.

T. Sax.

B. Sax.

mf

mp

16

1st Trpt.

2nd Trpt.

Horn

Trom.

Bar.

Tuba

Mlt. 1

Mlt. 2

Timp.

Perc. 1

Perc. 2

Perc. 3

mf

mp

st. mute (opt.)

mf

st. mute (opt.)

mp

Trombone cues

mp

mp

34 Faster (♩ = 146)

Flute *mf* bell tones

Oboe *f* *mf* bell tones

1st Clar. *mf* bell tones

2nd Clar. *mf* bell tones

B. Clar.

Bsn. *f* *mf*

A. Sax.

T. Sax. *f*

B. Sax.

34 Faster (♩ = 146)

1st Trpt. *f*

2nd Trpt. *f*

Horn *f*

Trom. *f* play *mf* Baritone cues

Bar. *f* play *mf*

Tuba *f* play

Mlt. 1 *mf*

Mlt. 2 *mf*

Timp. *f* *mf*

Perc. 1 *mp*

Perc. 2 *p* *mf*

Perc. 3 *mp*

Flute

Oboe

1st Clar.

2nd Clar.

B. Clar.

Bsn.

A. Sax.

T. Sax.

B. Sax.

1st Trpt.

2nd Trpt.

Horn

Trom.

Bar.

Tuba

Mlt. 1

Mlt. 2

Timp.

Perc. 1

Perc. 2

Perc. 3

mf

f

mf

f

mf

f

mf

f

mf

f

mp

p

mf

f

Stick on sus. cym.

Cr. Cym. (choke)

36 37 38 39 40 41 42

Allegro (♩ = c. 120)
Straight ♩ = ♩

Flute
Oboe
1st Clar.
2nd Clar.
B. Clar.
Bsn.
A. Sax.
T. Sax.
B. Sax.
1st Trpt.
2nd Trpt.
Horn
Trom.
Bar.
Tuba
Mlt. 1
Mlt. 2
Timp.
Perc. 1
Perc. 2
Perc. 3

53 Triumphantly! (♩ = 108)

Flute *mp* *f* *rit.*

Oboe *mp* *f*

1st Clar. *mp* *f*

2nd Clar. *mp* *f*

B. Clar. *p* *mf*

Bsn. *p* *mf*

A. Sax. *mp* *f*

T. Sax. *p* *mf*

B. Sax. *p* *mf*

1st Trpt. *p* *f* *rit.*

2nd Trpt. *p* *f*

Horn *p* *f*

Trom. *p* *mf*

Bar. *p* *mf*

Tuba *p* *mf*

Mlt. 1 *p* *f*

Mlt. 2 *mf*

Timp. *mf*

Perc. 1 *mp* *mf*

Perc. 2 *p* *f*

Perc. 3 *mp* *f*

Flute

Oboe

1st Clar.

2nd Clar.

B. Clar.

Bsn.

A. Sax.

T. Sax.

B. Sax.

1st Trpt.

2nd Trpt.

Horn

Trom.

Bar.

Tuba

Mlt. 1

Mlt. 2

Timp.

Perc. 1

Perc. 2

Perc. 3

f

mf

mp

Faster (♩ = 146)

Flute

Oboe

1st Clar.

2nd Clar.

B. Clar.

Bsn.

A. Sax.

T. Sax.

B. Sax.

Faster (♩ = 146)

1st Trpt.

2nd Trpt.

Horn

Trom.

Bar.

Tuba

Mlt. 1

Mlt. 2

Timp.

Perc. 1

Perc. 2

Perc. 3