

FULL CONDUCTOR SCORE
Score Cat.# 012-2975-01

Into the Raging River

Tone Poem for Symphonic Band

by Steven Reineke



C.L. BARNHOUSE COMPANY

Music Publishers, 205 Cowan Ave. W., P.O. Box 680
Oskaloosa, Iowa 52577 U.S.A.

INTO THE RAGING RIVER

Instrumentation

Full Conductor Score	1
C Piccolo	1
1st & 2nd C Flutes	8
Oboe	2
1st Bb Clarinet.....	3
2nd Bb Clarinet	3
3rd Bb Clarinet	3
Bb Bass Clarinet	2
Bassoon	2
1st Eb Alto Saxophone	3
2nd Eb Alto Saxophone/Alto Clarinet.....	3
Bb Tenor Saxophone	2
Eb Baritone Saxophone	1
1st Bb Trumpet	3
2nd Bb Trumpet	3
3rd Bb Trumpet.....	3
1st & 2nd F Horns.....	2
1st Trombone	2
2nd Trombone.....	2
3rd Trombone	2
Baritone BC.....	2
Baritone TC.....	1
Tubas	4
String Bass	1
Mallets: Vibes/Glock/Chimes	4
Timpani	1
Percussion 1: Cymbals	2
Percussion 2: Snare Drum/Bass Drum/Glock	3
Auxiliary Percussion:	
Tam-Tam/Mark Tree/Sleigh Bells/Triangle/Tom-Toms/Field Drum	5

Program Notes

INTO THE RAGING RIVER is a programmatic tone poem for symphonic band. The piece was inspired by a whitewater rafting trip on the Gauley River in the mountains of southern West Virginia.

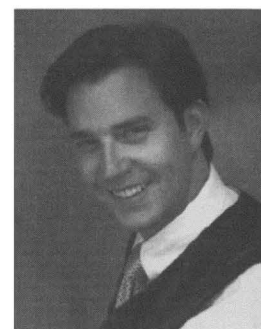
The opening of the composition, (m. 1-25), depicts the sunrise as we watch from the bank of the river. Dawn breaks with a single ray of light that grows with intensity until the entire gorge is bathed in the glorious morning sun. The next section, (m. 26-86), underscores our entry into the river as we launch our raft and begin to run the rapids. This section is full of anticipation, excitement and sheer ecstasy. After several thrills and spills on the whitewater, we come across a resting place (m. 87-144). Here the water is calm and we have a chance to take in all of the beauty of the fall foliage and the rock formations surrounding us. The serenity is soon interrupted by the gurgling sounds of the river as we approach more rapids (m. 145-184). This time we have to battle the river as it brutally tosses us around. Our adrenaline surges as we approach our final obstacle, a thirteen foot, class IV waterfall. The finale of the piece, (m. 185-213), portrays our exhilaration as we heroically plunge over Sweets Falls, thus ending our journey on the raging river.

Steven Reineke

Conductor note: At m. 199 the snare drum and the antiphonal field drum should be played on opposite sides of the stage behind the band.

ABOUT THE COMPOSER

Born in 1970 and raised in Tipp City, Ohio, Steven Reineke focused his youthful musical pursuits on learning to play the trumpet. At age fifteen he taught himself how to play the piano. He continued his trumpet studies at Miami University in Oxford, Ohio, receiving two bachelor of music degrees with honors in both trumpet performance and music composition.



After graduating from college, Mr. Reineke moved to Los Angeles with the assistance of the Miami University Joanna Jackson Goldman Memorial Prize. He participated in the ASCAP Film Composers workshop led by Fred Karlin. As a composer in the workshop, Mr. Reineke conducted the Warner Brothers Studio Orchestra in recording sessions of his own music. The Los Angeles Composers Guild Orchestra, conducted by Mr. Reineke, has also recorded his compositions.

Following his residency in Los Angeles, Mr. Reineke returned to Cincinnati to orchestrate an original score for the Cincinnati Ballet Company's production of "Peter Pan". The Illinois Philharmonic Orchestra presented the world premieres of two of his orchestral compositions, "Diamond Fanfare" in 1994 and "Vasquez Ridge" in 1995.

Mr. Reineke joined the Cincinnati Pops staff in the summer of 1995 as the Music Assistant and Principal Arranger/Composer. Since then he has had several arrangements and original compositions recorded by the Pops on seven different TELARC albums. In 1996 the orchestra presented the world premieres of his "Celebration Fanfare", and "Casey at the Bat" (An American Narrative Folk Tale) with Burt Reynolds as narrator, at a special concert during the American Symphony Orchestra League conference in Cincinnati. In October of 1996, the Cincinnati Pops premiered Mr. Reineke's latest composition, "The Legend of Sleepy Hollow", with actor Robert Guillaume narrating, on a special Halloween Pops Concert on PBS-TV.

Steven Reineke made his debut with the National Symphony Orchestra when he shared the podium with his mentor, renowned Pops conductor, Maestro Erich Kunzel, at the 1996 National Memorial Day Concert on the steps of the U.S. Capitol in Washington D.C. He has also guest conducted the Indianapolis Symphony, the Naples Philharmonic (Fla), the Toronto Symphony, the Cincinnati Pops Orchestra, and the National Symphony of Taiwan in Taipei. He made his Vermont Symphony Orchestra conducting debut in July 1997.

Mr. Reineke also contributes compositions to educational music programs and is a guest conductor and clinician with numerous high school and junior high school bands.

As a resident of Cincinnati, Steve enjoys participating in the city's many Germanic music groups, recalling his own German heritage and indulging his love of outdoor sports, including skiing, hiking, boating, and golf.

INTO THE RAGING RIVER

Tone Poem for Symphonic Band

Conductor Score
012-2975-00

Duration: approx. 7:20

Steven Reineke

Tranquillo e Semplice (♩ = 88)

8

C Piccolo (optional)

1st & 2nd Flutes

Oboe

1st B♭ Clarinet

2nd & 3rd B♭ Clarinets

B♭ Bass Clarinet

Bassoon

1st E♭ Alto Saxophone

2nd E♭ Alto Saxophone
E♭ Alto Clarinet

B♭ Tenor Saxophone

E♭ Baritone Saxophone

1st B♭ Trumpet

2nd & 3rd B♭ Trumpets

1st & 2nd F Horns

1st Trombone

2nd & 3rd Trombones

Baritone

Tuba

String Bass

Mallet Percussion

Timpani

Percussion 1: Cymbals

Percussion 2:
Snare Drum/Bass Drum/
Glock/Mark Tree

Auxiliary Percussion:
Tam-Tam/Mark Tree/
Sleigh Bells/Triangle/
Tom-Toms/Field Drum

1st div., 2nd tacet

div.

Hn. cue

1. Solo

Bowed Vibes, motor off (use Double Bass bow and 2 players if necessary, bow freely)

Sus. Cym.

Glock (brass mallets)

Tam-Tam

1 2 3 4 5 6 7 8

© 1999 Birch Island Music Press, (ASCAP), P.O. Box 680, Oskaloosa, IA, 52577
International Copyright Secured. All rights reserved. Printed in USA.

Warning! This composition is protected by copyright law. To copy or reproduce it by any method is an infringement of the copyright law.

Stringendo - 15

Picc.

Fl. 1 & 2

Ob.

Cl. 1

Cl. 2 & 3

B. Cl.

Bsn.

A. Sx. 1

A. Sx. 2
Al. Cl.

T. Sx.

B. Sx.

Stringendo - 15

Trp. 1

Trp. 2 & 3

Hrn. 1 & 2

Trb. 1

Trb. 2 & 3

Bar.

Tuba

St. Bs.

Mall.

Timp.

Perc. 1

Perc. 2

Aux. Perc.

9 10 11 12 13 14 15 16 17

Molto Allargando

Picc.

Fl. 1 & 2

Ob.

Cl. 1

Cl. 2 & 3

B. Cl.

Bsn.

A. Sx. 1

A. Sx. 2

Al. Cl.

T. Sx.

B. Sx.

Trp. 1

Trp. 2 & 3

Hrn. 1 & 2

Trb. 1

Trb. 2 & 3

Bar.

Tuba

St. Bs.

Mall.

Timp.

Perc. 1

Perc. 2

Aux. Perc.

mp, *mf*, *cresc.*, *fp*, *div.*, *molto*, *a2*, *B.D.*

Maestoso (lunga) **25** (♩ = 92) **Accel. poco a poco** - - - - -

Picc.

Fl. 1 & 2

Ob.

Cl. 1

Cl. 2 & 3

B. Cl.

Bsn.

A. Sx. 1

A. Sx. 2
Al. Cl.

T. Sx.

B. Sx.

Trp. 1

Trp. 2 & 3

Hrn. 1 & 2

Trb. 1

Trb. 2 & 3

Bar.

Tuba

St. Bs.

Glock. (brass mallets)

Mall.

Timp.

Perc. 1

Perc. 2

Tam-Tam

Aux. Perc.

f *pp* *p* *cresc.* *div.* *a2* *3rd Cl., Bs. Cl. cue* *Bs. Cl. cue*

22 23 24 25 26 27 28

Picc.

Fl. 1 & 2

Ob.

Cl. 1

Cl. 2 & 3

B. Cl.

Bsn.

A. Sx. 1

A. Sx. 2
Al. Cl.

T. Sx.

B. Sx.

Trp. 1

Trp. 2 & 3

Hrn. 1 & 2

Trb. 1

Trb. 2 & 3

Bar.

Tuba

St. Bs.

Mall.

Timp.

Perc. 1

Perc. 2

Aux. Perc.

29 30 31 32 33 34

(Accel.) - - - - - 37 Allegro Giocosso (♩ = 144)

Picc.

Fl. 1 & 2

Ob.

Cl. 1

Cl. 2 & 3

B. Cl.

Bsn.

A. Sx. 1

A. Sx. 2

Al. Cl.

T. Sx.

B. Sx.

(Accel.) - - - - - 37 Allegro Giocosso (♩ = 144)

Trp. 1

Trp. 2 & 3

Hrn. 1 & 2

Trb. 1

Trb. 2 & 3

Bar.

Tuba

St. Bs.

Mall.

Timp.

Perc. 1

Perc. 2

Aux. Perc.

Glock.

Sleigh Bells

Picc.

Fl. 1 & 2 *sim.*

Ob.

Cl. 1

Cl. 2 & 3

B. Cl.

Bsn.

A. Sx. 1

A. Sx. 2
Al. Cl.

T. Sx.

B. Sx.

Trp. 1

Trp. 2 & 3

Hrn. 1 & 2

Trb. 1

Trb. 2 & 3

Bar.

Tuba

St. Bs.

Mall.

Timp. *Solo*
mp

Perc. 1

Perc. 2

Aux. Perc. *sim.*

Picc.

Fl. 1 & 2
cresc. *mf* *a2*

Ob.
mp *cresc.* *mf*

Cl. 1
cresc. *mf*

Cl. 2 & 3
cresc. *mf*

B. Cl.
mp *cresc.* *mf* *sim.*

Bsn.
mp *cresc.* *mf*

A. Sx. 1
mp *cresc.* *mf* ————— *p*

A. Sx. 2
Al. Cl.
mp *cresc.* *mf* ————— *p*

T. Sx.
mp *cresc.* *mf*

B. Sx.
mp *cresc.* *mf*

47

Trp. 1

Trp. 2 & 3

Hrn. 1 & 2
mp *cresc.* *mf* ————— *p*

Trb. 1
mf *sim.*

Trb. 2 & 3
mf *sim.*

Bar.
mf *sim.*

Tuba
mf *sim.*

St. Bs.
pizz. *mf*

Mall.

Timp.
mf

Perc. 1
pp *cresc.* *mf*

Perc. 2
mf (lightly)

Aux. Perc.
cresc. *mf*

45 46 47 48 49

Picc. *mf* *div.* *cresc.*

Fl. 1 & 2 *cresc.*

Ob. *cresc.*

Cl. 1 *cresc.*

Cl. 2 & 3 *cresc.*

B. Cl. *cresc.*

Bsn. *mf* *cresc.*

A. Sx. 1 *mf* *cresc.*

A. Sx. 2
Al. Cl. *mf* *cresc.*

T. Sx. *mf* *cresc.*

B. Sx. *mf* *cresc.*

Trp. 1 (open) *mf* *cresc.*

Trp. 2 & 3 (open) *mf* *cresc.*

Hrn. 1 & 2 *mp* *mf* *p* *mf* *cresc.*

Trb. 1 *cresc.*

Trb. 2 & 3 *cresc.*

Bar. *cresc.*

Tuba *cresc.*

St. Bs. *arco* *cresc.*

Mall.

Timp.

Perc. 1 *cresc.*

Perc. 2 *cresc.*

Aux. Perc. *cresc.*

50

51

52

53

54

57

Picc.

Fl. 1 & 2

Ob.

Cl. 1

Cl. 2 & 3

B. Cl.

Bsn.

A. Sx. 1

A. Sx. 2
Al. Cl.

T. Sx.

B. Sx.

Trp. 1

Trp. 2 & 3

Hrn. 1 & 2

Trb. 1

Trb. 2 & 3

Bar.

Tuba

St. Bs.

Mall.

Timp.

Perc. 1

Perc. 2

Aux. Perc.

55

56

57

58

59

f

mf

dim.

Soli

a2-Soli

a2

Glock.

mp

Mark Tree

l.v.

Picc. *mf* 5 *f*

Fl. 1 & 2 5 *a2* *cresc.*

Ob. 5 *cresc.*

Cl. 1 5 *cresc.*

Cl. 2 & 3 5 *cresc.*

B. Cl. *cresc.*

Bsn. *cresc.*

A. Sx. 1 *cresc.*

A. Sx. 2 *cresc.*

Al. Cl. *cresc.*

T. Sx. *cresc.*

B. Sx. *cresc.*

Trp. 1 *cresc.*

Trp. 2 & 3 *cresc.*

Hrn. 1 & 2 *cresc.*

Trb. 1 *cresc.*

Trb. 2 & 3 *cresc.*

Bar. *cresc.*

Tuba *cresc.*

St. Bs. *cresc.*

Mall. *f*

Timp. *mf* *cresc.*

Perc. 1 *p* *mf* *mp* *molto*

Perc. 2 *mf* *cresc.*

Aux. Perc.

60 61 62 63 64

65

Picc.

Fl. 1 & 2

Ob.

Cl. 1

Cl. 2 & 3

B. Cl.

Bsn.

A. Sx. 1

A. Sx. 2
Al. Cl.

T. Sx.

B. Sx.

65

Trp. 1

Trp. 2 & 3

Hrn. 1 & 2

Trb. 1

Trb. 2 & 3

Bar.

Tuba

St. Bs.

Mall.

Timp.

Perc. 1

Perc. 2

Aux. Perc.

Triangle

65 66 67 68

Picc.
Fl. 1 & 2
Ob.
Cl. 1
Cl. 2 & 3
B. Cl.
Bsn.
A. Sx. 1
A. Sx. 2
Al. Cl.
T. Sx.
B. Sx.
Trp. 1
Trp. 2 & 3
Hrn. 1 & 2
Trb. 1
Trb. 2 & 3
Bar.
Tuba
St. Bs.
Mall.
Timp.
Perc. 1
Perc. 2
Aux. Perc.

69 70 71 72

This page contains the musical score for measures 69 through 72. The score is arranged in a standard orchestral format with multiple staves for each instrument. The instruments listed on the left are Piccolo (Picc.), Flutes 1 & 2 (Fl. 1 & 2), Oboe (Ob.), Clarinet 1 (Cl. 1), Clarinets 2 & 3 (Cl. 2 & 3), Bass Clarinet (B. Cl.), Bassoon (Bsn.), Saxophones 1 & 2 (A. Sx. 1, A. Sx. 2), Alto Clarinet (Al. Cl.), Tenor Saxophone (T. Sx.), Bass Saxophone (B. Sx.), Trumpet 1 (Trp. 1), Trumpets 2 & 3 (Trp. 2 & 3), Horns 1 & 2 (Hrn. 1 & 2), Trombone 1 (Trb. 1), Trombones 2 & 3 (Trb. 2 & 3), Baritone (Bar.), Tuba, Snare Bass (St. Bs.), Mallets (Mall.), Timpani (Timp.), Percussion 1 (Perc. 1), Percussion 2 (Perc. 2), and Auxiliary Percussion (Aux. Perc.). The score includes various musical notations such as notes, rests, dynamics (e.g., *f*, *tr*), and articulation marks. A large watermark reading 'Not Valid for Performance' is overlaid diagonally across the page.

73

Picc.

Fl. 1 & 2

Ob.

Cl. 1

Cl. 2 & 3

B. Cl.

Bsn.

A. Sx. 1

A. Sx. 2
Al. Cl.

T. Sx.

B. Sx.

73

Trp. 1

Trp. 2 & 3

Hrn. 1 & 2

Trb. 1

Trb. 2 & 3

Bar.

Tuba

St. Bs.

Mall.

Timp.

Perc. 1

Perc. 2

Aux. Perc.

73 74 75 76

81

Picc.

Fl. 1 & 2

Ob.

Cl. 1

Cl. 2 & 3

B. Cl.

Bsn.

A. Sx. 1

A. Sx. 2
Al. Cl.

T. Sx.

B. Sx.

Trp. 1

Trp. 2 & 3

Hrn. 1 & 2

Trb. 1

Trb. 2 & 3

Bar.

Tuba

St. Bs.

Mall.

Chimes

Timp.

Perc. 1

Perc. 2

Aux. Perc.

77 78 79 80 81

dim. *p* *mf* *f* *mp* *fp*

Molto rit.

87 **Meno Mosso** (♩ = 92)

Picc.

Fl. 1 & 2

Ob.

Cl. 1

Cl. 2 & 3

B. Cl.

Bsn.

A. Sx. 1

A. Sx. 2
Al. Cl.

T. Sx.

B. Sx.

Molto rit.

87 **Meno mosso** (♩ = 92)

Trp. 1

Trp. 2 & 3

Hrn. 1 & 2

Trb. 1

Trb. 2 & 3

Bar.

Tuba

St. Bs.

Mall.

Timp.

Perc. 1

Perc. 2

Aux. Perc.

82

83

84

85

86

87

Rit.

Picc.

Fl. 1 & 2

Ob.

Cl. 1

Cl. 2 & 3

B. Cl.

Bsn.

A. Sx. 1

A. Sx. 2
Al. Cl.

T. Sx.

B. Sx.

Trp. 1

Trp. 2 & 3

Hrn. 1 & 2

Trb. 1

Trb. 2 & 3

Bar.

Tuba

St. Bs.

Mall.

Timp.

Perc. 1

Perc. 2

Aux. Perc.

Mark Tree

l.v.

mp

mf

dim.

p

open

Sax cue

Glock

Cmp

88 89 90 91 92 93 94

For reference only. Not valid for performance.

95 Cantabile (♩ = 100)

Picc.

Fl. 1 & 2

Ob.

Cl. 1

Cl. 2 & 3

B. Cl.

Bsn.

A. Sx. 1

A. Sx. 2
Al. Cl.

T. Sx.

B. Sx.

(cont. Solo)
mp espress.

(*tutti*)
p

95 Cantabile (♩ = 100)

Trp. 1

Trp. 2 & 3

Ill. 1 & 2

Trb. 1

Trb. 2 & 3

Bar.

Tuba

St. Bs.

Mall.

Timp.

Perc. 1

Perc. 2

Aux. Perc.

Vibes, motor on med.
p

mp

95 96 97 98 99 100 101 102 103

Picc.

Fl. 1 & 2

Ob.

Cl. 1

Cl. 2 & 3

B. Cl.

Bsn.

A. Sx. 1

A. Sx. 2
Al. Cl.

T. Sx.

B. Sx.

Trp. 1

Trp. 2 & 3

Hrn. 1 & 2

Trb. 1

Trb. 2 & 3

Bar.

Tuba

St. Bs.

Mall.

Timp.

Perc. 1

Perc. 2

Aux. Perc.

Calando 115 A Tempo

Picc.

Fl. 1 & 2 *end solo a2 mf* *f*

Ob. *(tutti) mf* *f*

Cl. 1 *cresc.* *f*

Cl. 2 & 3 *cresc.* *a2 f*

B. Cl. *cresc.* *f*

Bsn. *p* *cresc.* *f*

A. Sx. 1 *p cresc.* *mf*

A. Sx. 2
Al. Cl. *p cresc.* *mf*

T. Sx. *mf*

B. Sx. *mf*

Calando 115 A Tempo

Trp. 1 *Solo mf* *f*

Trp. 2 & 3

Ill. 1 & 2 *p cresc.* *mf* *a2 mf* *dim.*

Trb. 1 *mp* *mf*

Trb. 2 & 3 *mp* *mf*

Bar. *p* *cresc.* *mf*

Tuba *mf*

St. Bs. *mf*

Mall. *p.*

Timp. *mp* *mf* *mp* *mf*

Perc. 1 *mp cresc.* *mf* *mp* *mf*

Perc. 2

Aux. Perc. *Mark Tree* *l.v.* *mf*

112 113 114 115 116 117 118 119

Picc.

Fl. 1 & 2

Ob.

Cl. 1

Cl. 2 & 3

B. Cl.

Bsn.

A. Sx. 1

A. Sx. 2
Al. Cl.

T. Sx.

B. Sx.

Trp. 1

Trp. 2 & 3

Hrn. 1 & 2

Trb. 1

Trb. 2 & 3

Bar.

Tuba

St. Bs.

Mall.

Timp.

Perc. 1

Perc. 2

Aux. Perc.

div.

mp

mf

f

p

Glock.

120 121 122 123 124 125 126

Rit.

129 **Meno mosso, Tranquillo**

Picc.

Fl. 1 & 2

Ob.

Cl. 1

Cl. 2 & 3

B. Cl.

Bsn.

A. Sx. 1

A. Sx. 2
Al. Cl.

T. Sx.

B. Sx.

dim. *p*

mf

div.

Solo

Rit.

129 **Meno mosso, Tranquillo**

Trp. 1

Trp. 2 & 3

Hrn. 1 & 2

Trb. 1

Trb. 2 & 3

Bar.

Tuba

St. Bs.

Mall.

Timp.

Perc. 1

Perc. 2

Aux. Perc.

(end solo)

mp

dim. *p*

127 128 129 130 131 132 133

Rit. 137 A Tempo (1 player w/flutes) Rit. - - -

Picc. *p* *pp*

Fl. 1 & 2 (2 players) *p* *pp*

Ob.

Cl. 1

Cl. 2 & 3

B. Cl.

Bsn. *p*

A. Sx. 1

A. Sx. 2

Al. Cl.

T. Sx.

B. Sx.

Rit. 137 A Tempo Rit. - - -

Trp. 1

Trp. 2 & 3

Hrn. 1 & 2

Trb. 1 (Soli) *p*

Trb. 2 & 3 (Soli) *p*

Bar. (Soli) *p*

Tuba (Soli) *p*

St. Bs.

Mall. Glock. (hard rubber mallets) *mf*

Timp.

Perc. 1

Perc. 2

Aux. Perc.

134 135 136 137 138 139 140 141

145 **Mysterioso** (♩ = 84)

tutti *blow air through inst.*

p *mf*

tutti *blow air through inst.*

p *mf*

blow air through inst.

p *mf*

stagger breathing

p *p*

stagger breathing

p

blow air through inst.

p *mf*

stagger breathing

p

145 **Mysterioso** (♩ = 84)

blow air through inst.

p *mf* *p*

a2 *blow air through inst.*

p *mf* *p*

blow air through inst.

p *mf* *p*

blow air through inst.

pp *pp* *p*

blow air through inst.

pp *pp* *p*

blow air through inst.

pp *pp* *p*

stagger breathing

p

Solo

wood sticks

pp *mf* *p*

Tam-Tam

pp *mf*

142

143

144

145

146

147

Picc. *p* *mf* *p* *mf* *p* **Accel.** - - - - -
 Fl. 1 & 2 *p* *mf* *p* *mf* *p*
 Ob. *p* *mf* *p* *mf* *p*
 Cl. 1 *(tutti)* *p* *mf* *p*
 Cl. 2 & 3 *p* *mf* *p*
 B. Cl. *cresc. poco a poco*
 Bsn. *cresc. poco a poco*
 A. Sx. 1 *p* *mf* *p*
 A. Sx. 2 *p* *mf* *p*
 Al. Cl. *p* *mf* *p*
 T. Sx. *p* *mf* *p* *mf* *p*
 B. Sx. *cresc. poco a poco*
 Trp. 1 *mf* *p* *mf* *p* **Accel.** - - - - -
 Trp. 2 & 3 *mf* *p* *mf* *p*
 Hrn. 1 & 2 *mf* *p* *mf* *p*
 Trb. 1 *mf* *p* *mf* *p*
 Trb. 2 & 3 *mf* *p* *mf* *p*
 Bar. *mf* *p* *mf* *p*
 Tuba *cresc. poco a poco*
 St. Bs. *cresc. poco a poco*
 Mall. *cresc. poco a poco*
 Timp. *cresc. poco a poco*
 Perc. 1 *p* *mp* *p* *cresc. poco a poco*
 Perc. 2 *p* *cresc. poco a poco*
 Aux. Perc. *p* *mp* *p* *cresc. poco a poco*

148

149

150

151

For reference only. Not valid for performance.

Picc. *p*

Fl. 1 & 2 (2ⁿ) *p* (⁺1) *p*

Ob. *p*

Cl. 1 *p*

Cl. 2 & 3 *p*

B. Cl. *p*

Bsn. *p*

A. Sx. 1 *p*

A. Sx. 2 Al. Cl. *p*

T. Sx. *p*

B. Sx. *p*

Trp. 1 *f*

Trp. 2 & 3 *f* a2 *f*

Hrn. 1 & 2 *f*

Trb. 1 *p* cresc. a2

Trb. 2 & 3 *p* cresc. a2

Bar. *p* cresc.

Tuba *p* cresc.

St. Bs. *p* cresc.

Mall. *p* cresc.

Timp. *p* cresc.

Perc. 1 *mp*

Perc. 2 *p* cresc.

Aux. Perc. *p* cresc.

152 153 154

155 Feroce e Molto Agitato (♩ = 160)

Picc.

Fl. 1 & 2

Ob.

Cl. 1

Cl. 2 & 3

B. Cl.

Bsn.

A. Sx. 1

A. Sx. 2
Al. Cl.

T. Sx.

B. Sx.

155 Feroce e Molto Agitato (♩ = 160)

Trp. 1

Trp. 2 & 3

Hrn. 1 & 2

Trb. 1

Trb. 2 & 3

Bar.

Tuba

St. Bs.

Mall.

Chimes

Timp.

Perc. 1

Perc. 2

Aux. Perc.

155 156 157 158 159 160

163

Picc. *mp* *sim.*

Fl. 1 & 2 *a2 mp sim.*

Ob.

Cl. 1

Cl. 2 & 3

B. Cl.

Bsn.

A. Sx. 1 *mf*

A. Sx. 2 *mf*

Al. Cl. *mf*

T. Sx. *mf*

B. Sx.

163

Trp. 1

Trp. 2 & 3

Hrn. 1 & 2 *mf*

Trb. 1

Trb. 2 & 3 *div.*

Bar.

Tuba *div.*

St. Bs.

Mall.

Timp.

Perc. 1 *mf*

Perc. 2 *mp*

Aux. Perc. *mp*
2 Toms - med. and low

161 162 163 164 165 166

169

Picc. *sub. f* *sfz*

Fl. 1 & 2 *sub. f* *sfz*

Ob. *f* *sfz*

Cl. 1 *f* *sfz*

Cl. 2 & 3 *f* *sfz*

B. Cl. *sub. f* *sfz sub. p* *cresc.*

Bsn. *sub. f* *sfz sub. p* *cresc.*

A. Sx. 1 *sub. f* *sfz sub. p* *cresc.*

A. Sx. 2
Al. Cl. *sub. f* *sfz sub. p* *cresc.*

T. Sx. *sub. f* *sfz sub. p* *cresc.*

B. Sx. *sub. f* *sfz sub. p* *cresc.*

Trp. 1 *f* *sfz sub. p* *cresc.*

Trp. 2 & 3 *f* *sfz sub. p* *cresc.*

Hrn. 1 & 2 *sub. f* *sfz* *a2* *cresc.*

Trb. 1 *f* *sfz sub. p* *cresc.*

Trb. 2 & 3 *f* *sfz sub. p* *cresc.*

Bar. *f* *sfz sub. p* *cresc.*

Tuba *sub. f* *sfz sub. p* *cresc.*

St. Bs. *sub. f* *sfz sub. p* *cresc.*

Mall. *f* *sfz*

Timp. *f* *sfz*

Perc. 1 *f* *sfz*

Perc. 2 *sub. f* *sfz sub. p* *cresc.*

Aux. Perc. *sub. f* *sfz*

167 168 169 170 171 172

Picc.

Fl. 1 & 2
mp *cresc.* *f*

Ob.
mp *cresc.* *f*

Cl. 1
mp *cresc.* *f*

Cl. 2 & 3
mp *cresc.* *f*

B. Cl.
f

Bsn.
f

A. Sx. 1
f

A. Sx. 2
Al. Cl.
f

T. Sx.
f

B. Sx.
f

Trp. 1
div. *f*

Trp. 2 & 3
f

Hrn. 1 & 2
div. *f*

Trb. 1
f

Trb. 2 & 3
f

Bar.
f

Tuba
f

St. Bs.
f

Mall.
f

Temp.
mp *cresc.* *f*

Perc. 1
mp *cresc.* *f*

Perc. 2
mp *cresc.* *f*

Aux. Perc.
f

173 174 175 176 177

178

Picc. *sub. p* **Accel.**

Fl. 1 & 2 *sub. p*

Ob. *sub. p*

Cl. 1 *sub. p*

Cl. 2 & 3 *sub. p*

B. Cl. *sub. p*

Bsn. *sub. p*

A. Sx. 1 *sub. p*

A. Sx. 2
Al. Cl. *sub. p*

T. Sx. *sub. p*

B. Sx. *sub. p*

178

Trp. 1 *sub. p* **Accel.**

Trp. 2 & 3 *sub. p*

Hrn. 1 & 2 *sub. p*

Trb. 1 *sub. p*

Trb. 2 & 3 *sub. p*

Bar. *sub. p*

Tuba *sub. p*

St. Bs. *sub. p*

Mall.

Timp. *sub. p* **Solo**

Perc. 1 *ff* *secco* *ff* *f* *sub. p*

Perc. 2 *ff* *sub. p*

Aux. Perc. *ff* *sub. p*

178 179 180 181 182

185 Moderato (♩ = 120)

Picc. *ff* *p* (Solo) *p*

Fl. 1 & 2 *ff* *p* Picc. cue *p*

Ob. *ff* *p*

Cl. 1 *ff* *p*

Cl. 2 & 3 *ff* *p*

B. Cl. *ff* *p*

Bsn. *ff* *p*

A. Sx. 1 *ff* *p* *p*

A. Sx. 2
Al. Cl. *ff* *p* *p*

T. Sx. *ff* *p* *p*

B. Sx. *ff* *p*

Trp. 1 *ff* *p*

Trp. 2 & 3 *ff* *p*

Hrn. 1 & 2 *ff* *p*

Trb. 1 *ff* *p*

Trb. 2 & 3 *ff* *p*

Bar. *ff* *p*

Tuba *ff* *p*

St. Bs. *ff* *p*

Mall. *ff* *p*

Timp. *ff* *p*

Perc. 1 *ff* *p*

Perc. 2 (Solo) *p*

Aux. Perc. *ff* *p*

183 184 185 186 187 188

Picc. *(tutti)*

Fl. 1 & 2 *Play a2 p*

Ob. *p*

Cl. 1 *p*

Cl. 2 & 3 *p*

B. Cl.

Bsn.

A. Sx. 1

A. Sx. 2
Al. Cl.

T. Sx.

B. Sx.

Trp. 1

Trp. 2 & 3

Hrn. 1 & 2 *p*

Trb. 1

Trb. 2 & 3

Bar.

Tuba *p*

St. Bs.

Mall.

Timp.

Perc. 1

Perc. 2

Aux. Perc.

189 190 191 192 193 194

Molto Allargando

199 Maestoso (♩ = 92)

Picc. *cresc.* *div.* *fp* *f*

Fl. 1 & 2 *cresc.* *fp* *f*

Ob. *cresc.* *fp* *f*

Cl. 1 *cresc.* *fp* *f*

Cl. 2 & 3 *cresc.* *fp* *f*

B. Cl. *cresc.* *fp* *f*

Bsn. *cresc.* *fp* *f*

A. Sx. 1 *cresc.* *fp* *f*

A. Sx. 2
Al. Cl. *cresc.* *f*

T. Sx. *cresc.* *fp* *f*

B. Sx. *mp cresc.* *fp* *f*

Trp. 1 *mp cresc.* *fp* *f*

Trp. 2 & 3 *mp cresc.* *fp* *f*

Hrn. 1 & 2 *cresc.* *f*

Trb. 1 *mp cresc.* *fp* *f*

Trb. 2 & 3 *mp cresc.* *fp* *f*

Bar. *cresc.* *fp* *f*

Tuba *cresc.* *fp* *f*

St. Bs. *cresc.* *fp* *f*

Mall. *f* Chimes

Timp. *cresc.* *fp* *f*

Perc. 1 *fp* *f*

Perc. 2 *cresc.* *mf* *fp* *f*

Aux. Perc. Antiphonal Field Drum (w/snare) *f*

195

196

197

198

199

Picc.

Fl. 1 & 2

Ob.

Cl. 1

Cl. 2 & 3

B. Cl.

Bsn.

A. Sx. 1

A. Sx. 2
Al. Cl.

T. Sx.

B. Sx.

Trp. 1

Trp. 2 & 3

Hrn. 1 & 2

Trb. 1

Trb. 2 & 3

Bar.

Tuba

St. Bs.

Mall.

Timp. (To reg. sticks)

Perc. 1

Perc. 2

Aux. Perc.

200 201 202 203

This page of a musical score contains parts for the following instruments:

- Picc.
- Fl. 1 & 2
- Ob.
- Cl. 1
- Cl. 2 & 3
- B. Cl.
- Bsn.
- A. Sx. 1
- A. Sx. 2 / Al. Cl.
- T. Sx.
- B. Sx.
- Trp. 1
- Trp. 2 & 3
- Hrn. 1 & 2
- Trb. 1
- Trb. 2 & 3
- Bar.
- Tuba
- St. Bs.
- Mall.
- Timp.
- Perc. 1
- Perc. 2
- Aux. Perc.

The score includes various musical notations such as dynamics (e.g., *div.*, *mp*), articulation (accents, slurs), and performance instructions (e.g., *tr* for trills, *6* for sixteenth notes). A large watermark reading "Not Valid for Performance" is overlaid diagonally across the page.

204

205

206

207

208

Molto Allargando

211 Molto Maestoso

Picc.

Fl. 1 & 2

Ob.

Cl. 1

Cl. 2 & 3

B. Cl.

Bsn.

A. Sx. 1

A. Sx. 2
Al. Cl.

T. Sx.

B. Sx.

Trp. 1

Trp. 2 & 3

Hn. 1 & 2

Trb. 1

Trb. 2 & 3

Bar.

Tuba

St. Bs.

Mall.

Timp.

Perc. 1

Perc. 2

Aux. Perc.

Tam-Tam

Molto Allargando

211 Molto Maestoso

mp

fp

ff

fff

sffz

mp

ff

fff

(choke)

(choke)

(choke)

209 210 211 212 213

For reference only.
Not valid for performance.