

**Grade
1 1/2**

Expanding ranges and rhythms for the Rising Band!

FULL CONDUCTOR SCORE
Catalog No. 024-4319-01

Volcano! (Kilauea)

David Shaffer

Rising Band Series

FOR DEVELOPING BANDS!



C.L. BARNHOUSE COMPANY®
Music Publishers • Oskaloosa, IA, 52577
www.barnhouse.com

Rising Band Series

(Grade levels 1 1/2 - 2)

The Rising Band Series is carefully designed and written to serve the performance needs of the developing band program. In addition to providing quality performance literature for your concert program, each title in the series provides an appropriate musical setting for the conductor/teacher to reinforce musical concepts and skills that have been addressed in the first two years of instruction. Written at two grade levels (1 1/2 and 2), the Rising Band Series provides a variety of musical works that employ the note and rhythm sequence used in most band method books. The Rising Band Series is a sound fundamental approach leading to a command of the concert band.

Volcano!

(Kilauea)

David Shaffer

Instrumentation

Full Conductor Score.....	1
Flute.....	10
Oboe.....	2
1st Bb Clarinet.....	6
2nd Bb Clarinet.....	6
Bb Bass Clarinet.....	2
Bassoon.....	2
Eb Alto Saxophone.....	8
Bb Tenor Saxophone.....	2
Eb Baritone Saxophone.....	2
1st Bb Trumpet.....	5
2nd Bb Trumpet.....	5
F Horn.....	4
Trombone.....	6
Baritone BC.....	2
Baritone TC.....	2
Tuba.....	4
Timpani.....	1
Xylophone.....	4
Percussion 1: Snare Drum, Bass Drum.....	3
Percussion 2: Suspended Cymbal.....	2
Percussion 3: Sleigh Bells, Tambourine.....	3
Piano/Keyboard (optional).....	1

Program Notes

Inspired by this composer's journey across the Big Island of Hawaii, **Volcano!** captures the force and intensity of the active volcano Kilauea. Dedicated to the Kea'au Middle School on the Big Island, this piece utilizes bold rhythms, dynamic percussion and strong melodic writing to paint a musical portrait of this breathtaking force of nature.

Notes to the conductor

In order to capture the energy of the piece, it is important the tempo be as bright as possible. The introduction should be haunting and mysterious leading into the "A" section at m. 13. When the melody occurs in m. 21 dynamic shaping of this musical phrase is very important.

m. 29 marks the start of the "B" section, which is more static and accented.

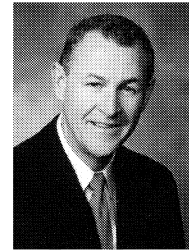
m. 45 is the rhythmic bridge between the "B" section and the recapitulation of the introduction. The percussive sound effect with pencils tapping on the music stands should be crisp and clean being careful not to rush the tempo.

I hope that you and your students find **Volcano!** to be a musically fulfilling experience.

David Shaffer

About the Composer

David Shaffer was born in Columbus, Ohio and attended Grove City High School. He holds a Bachelor Degree from The Ohio State University and a Master of Music Degree from Miami University (Ohio.) Mr. Shaffer has taught in the Ohio schools of Hamilton, Northridge, and Wyoming. Mr. Shaffer has been associated with the Miami University Marching Band for 31 years as Graduate Assistant Director (1978-80), Assistant Director (1980-97) and Director (1997 to date.) Under his direction, the Miami Band has performed twice at the University of Michigan, West Virginia University and the University of Cincinnati. In 2000 and 2005, the Miami Band performed a combined half-time show with The Ohio State University Marching Band. The Miami Band has performed for seven regional Bands of America Contests and annually hosts these events at Miami University in Oxford, Ohio. In 2003 the Miami Band performed as the "Santa Band" in the 77th annual Macy's Thanksgiving Day Parade in New York City.



In addition to his involvement with the Miami University Marching Band, Mr. Shaffer has over 350 compositions and arrangements in print. His compositions have been used at clinics and music festivals around the world and have been placed on contest required-performance lists in the United States, Canada, Europe, Australia, and Asia. Mr. Shaffer has been the recipient of the ASCAP Standard Award in Music Composition for 18 years.

Under the direction of Mr. Shaffer, the Wyoming High School String Orchestra performed as the opening group at the 1984 Midwest National Band and Orchestra Director's Clinic in Chicago. Additional Midwest conducting appearances were in 2000 and 2001 when Mr. Shaffer guest conducted his compositions with the Robinson School Band, Fairfax, Va., and the South Central Middle School Band, Cartersville, Ga. In November 2007, Mr. Shaffer was invited to conduct his composition **Purple Heart** with the Air Force Band of Flight, Dayton, Ohio, in honor of former band member Michael Cifuentes, who was killed in Iraq in August, 2005.

Mr. Shaffer is in demand as a conductor for new music reading clinics, music festivals, and music education seminars. During the summer of 1986 and 1992, he served as instrumental director for the Saskatchewan School of Fine Arts. In February of 1997 he conducted a program of his music, with the China Youth Corps Band in the National Concert Hall, Taipei, Taiwan. Mr. Shaffer is a past adjudicator for Drum Corps International and Drum Corps Midwest and has judged championship events for both organizations.

His professional affiliations include; Phi Mu Alpha, Kappa Kappa Psi, Phi Beta Mu, Music Educators National Convention, Ohio Music Education Association, Drum Corps Midwest & International Judges Guild, and American Society of Composers, Authors, and Publishers (ASCAP).

For more information please visit www.davidshaffermusic.com.

CD Recording Available



WFR383
AWAKEN THE GREATNESS
Album for the Young
The Washington Winds, Edward Petersen
- Conductor

CONTENTS: *Captain Courageous (Romeyn); Tantrum (Conaway); Photo Finish! (Swearingen); A Hymn Of Remembrance (Phillips); Into the Rapids (Shaffer); Raptors: Birds of Prey (Neeck); Celebrate the Season (Conaway); Winner's Circle (J. Johnson); As Shadows Fall (Romeyn); Milton, the Melting Snowman (Orcino); Volcano! (Shaffer); Awaken the Greatness (Grice); Hope Everlasting (Swearingen); Rockin' Nutcracker (arr. R. W. Smith); Sword of Fire (Romeyn); Somerset (Swearingen); Robotics (Romeyn); Call Of Duty (R. W. Smith); Maximum Mallets (Shaffer); Upon A Midnight Clear (R. W. Smith); Nature's Fury (J. McBride); Aura Lea (arr. R. W. Smith); Reign (R. W. Smith); A Furious Fable (Spears); Nighthawk (Swearingen); Santa's Angry Elves (Grice); Scottish Lullaby (arr. R. W. Smith); Epic Battle 3000 (Grice); All Aboard! (Conaway)*

VOLCANO!

(KILAUEA)

David Shaffer
(ASCAP)

Conductor Score
024-4319-00

With Spirit ♩ = 128 - 144

The score is arranged in a standard concert band format. The instruments listed on the left are: Flute, Oboe, 1st B♭ Clarinet, 2nd B♭ Clarinet, B♭ Bass Clarinet, Bassoon, E♭ Alto Saxophone, B♭ Tenor Saxophone, E♭ Baritone Saxophone, 1st B♭ Trumpet, 2nd B♭ Trumpet, F Horn, Trombone, Baritone, Tuba, Timpani, Xylophone, Percussion 1 (Snare Drum, Bass Drum), Percussion 2 (Sus. Cymbal), Percussion 3 (Sleigh Bells, Tambourine), and Piano/Keyboard (optional). The score is in 4/4 time with a key signature of two flats (B♭ and E♭). It features dynamic markings such as *mp* (mezzo-piano) and *mf* (mezzo-forte). A large watermark 'For Reference Only - Not valid for performance.' is overlaid diagonally across the page. The score is divided into measures 1 through 8, with measure numbers 2, 3, 4, 5, 6, 7, and 8 printed below the piano part.

Flute

Oboe

1st Clar.

2nd Clar.

B. Clar.

Bsn.

A. Sax.

T. Sax.

B. Sax.

1st Trpt.

2nd Trpt.

Horn

Trom.

Bar.

Tuba

Timp.

Xyl.
Hard Rubber Mallets

Perc. 1
hit cym/w stick

Perc. 2
f Sleigh Bells

Perc. 3
Tambourine

Pno./Keyb (opt)

9 10 11 12 13 14 15 16

f *mf* *mp*

21

Flute

Oboe

1st Clar.

2nd Clar.

B. Clar.

Bsn.

A. Sax.

T. Sax.

B. Sax.

1st Trpt.

2nd Trpt.

Horn

Trom.

Bar.

Tuba

Timp.

Xyl.

Perc. 1

Perc. 2

Perc. 3

Pno./Keyb (opt)

17

18

19

20

21

22

23

24

Flute

Oboe

1st Clar.

2nd Clar.

B. Clar.

Bsn.

A. Sax.

T. Sax.

B. Sax.

1st Trpt.

2nd Trpt.

Horn

Trom.

Bar.

Tuba

Timp.

Xyl.

Perc. 1

Perc. 2

Perc. 3

Pno./Keyb (opt)

Flute

Oboe

1st Clar.

2nd Clar.

B. Clar.

Bsn.

A. Sax.

T. Sax.

B. Sax.

1st Trpt.

2nd Trpt.

Horn

Trom.

Bar.

Tuba

Timp.

Xyl.

Perc. 1

Perc. 2

Perc. 3

Pno./Keyb (opt)

Flute *f* *mp* Hit stand w/pencil

Oboe *f* *mp* Hit stand w/pencil

1st Clar. *f* *mp* Hit stand w/pencil

2nd Clar. *f* *mp* Hit stand w/pencil

B. Clar. *f* *mp*

Bsn. *f* *mp* Hit stand w/pencil

A. Sax. *f* *mp*

T. Sax. *f* *mp*

B. Sax. *f* *mp*

1st Trpt. *f* *mp*

2nd Trpt. *f* *mp*

Horn *f* *mp*

Trom. *f* *mp*

Bar. *f* *mp*

Tuba *f* *mp*

Timp. *f* *mp* Hit stand w/pencil

Xyl. *f* *mp* Hit stand w/pencil

Perc. 1 *f* *mp* Hit stand w/pencil

Perc. 2 *f* *mp* Hit stand w/pencil

Perc. 3 *f* *mp* Hit stand w/pencil

Pno./Keyb (opt) *f* *mp*

Flute

Oboe

1st Clar.

2nd Clar.

B. Clar.

Bsn.

A. Sax.

T. Sax.

B. Sax.

1st Trpt.

2nd Trpt.

Horn

Trom.

Bar.

Tuba

Timp.

Xyl.

Perc. 1

Perc. 2

Perc. 3

Pno./Keyb (opt)

Flute

Oboe

1st Clar.

2nd Clar.

B. Clar.

Bsn.

A. Sax.

T. Sax.

B. Sax.

1st Trpt.

2nd Trpt.

Horn

Trom.

Bar.

Tuba

Timp.

Xyl.

Perc. 1

Perc. 2

Perc. 3

Pno./Keyb (opt)

Flute

Oboe

1st Clar.

2nd Clar.

B. Clar.

Bsn.

A. Sax.

T. Sax.

B. Sax.

1st Trpt.

2nd Trpt.

Horn

Trom.

Bar.

Tuba

Timp.

Xyl.

Perc. 1

Perc. 2

Perc. 3

Pno./Keyb (opt)