

FULL SCORE

*Commissioned for the PMEA District 5 Band Festival, John Manhollan, Host
In Memory of Raymond C. Schweinberg*

ALLEGHENY PORTRAIT

By CLAUDE T. SMITH (ASCAP)

Performance Time - 7:00

Instrumentation

1 - FULL SCORE	3 - Bb TRUMPET 1
2 - PICCOLO	3 - Bb TRUMPET 2
8 - FLUTE 1, 2	3 - Bb TRUMPET 3
2 - OBOE 1, 2	2 - F HORN 1 & 3
2 - BASSOON 1, 2	2 - F HORN 2 & 4
1 - Eb CLARINET	2 - TROMBONE 1
4 - Bb CLARINET 1	2 - TROMBONE 2
4 - Bb CLARINET 2	2 - TROMBONE 3
4 - Bb CLARINET 3	2 - BARITONE B.C.
1 - Eb ALTO CLARINET	2 - BARITONE T.C.
2 - Bb BASS CLARINET	4 - TUBA
1 - Eb CONTRA ALTO CLARINET	1 - STRING BASS
2 - Eb ALTO SAXOPHONE 1	9 - PERCUSSION
2 - Eb ALTO SAXOPHONE 2	
2 - Bb TENOR SAXOPHONE	
1 - Eb BARITONE SAXOPHONE	

10709 West 118th Terrace Overland Park, KS 66210

Copyright © 1986 JENSON PUBLICATIONS, INC. 7777 W. Bluemound Rd.,
Milwaukee, WI 53213

This edition distributed by CLAUDE T. SMITH PUBLICATIONS, INC. (1995)
10709 West 118th Terrace Overland Park, KS 66210

Picc. Fl. 1, 2

Ob. 1, 2

Bssn. 1, 2

E♭ Cl.

1 B♭ Cl.

2, 3

E♭ Alto Cl.

B♭ Bass Cl.

E♭ Alto Sax. 1, 2

B♭ Tenor Sax.

E♭ Bar. Sax.

1 B♭ Tpt.

2, 3

1, 3 F Hrn.

2, 4

1, 2 Trb.

3

Bar. Hrn.

Tuba

St. Bass

I Perc.

II

III

Milt. Perc.

Timp.

END SOLO

mf

mf

21 ^{as + acc.}

Picc. Fl. 1,2 *mf*

Ob. 1,2 *mf*

Bsn. 1,2 *mf*

E♭ Cl. *mf*

B♭ Cl. 1 *mf*

B♭ Cl. 2,3 *mf*

E♭ Alto Cl. *mf*

B♭ Bass Cl. *mf*

E♭ Alto Sax. 1,2 *mf*

B♭ Tenor Sax. *mf*

E♭ Bar. Sax. *mf*

B♭ Tpt. 1 *f* *mf sim.*

B♭ Tpt. 2,3 *f* *mf sim.*

F Horn. 1,3 *mf*

F Horn. 2,4 *mf*

Trb. 1,2 *f* *mf sim.*

Trb. 3 *f* *mf sim.*

Bar. Horn. *f* *mf*

Tuba *f* *mf*

St. Bass *f* *mf*

Perc. I *f* *mf*

Perc. II *f* *mf*

Perc. III *f* *mf*

Milt. Perc. (CHIMES) *mf*

Timp. *f* *mf*

21

25

ALLEGHENY PORTRAIT

19 20 21 22 23 24

Picc. Fl. 1, 2

Ob. 1, 2

Bsn. 1, 2

E♭ Cl. 1

B♭ Cl. 2, 3

E♭ Alto Cl.

B♭ Bass Cl.

E♭ Alto Sax. 1, 2

B♭ Tenor Sax.

E♭ Bar. Sax.

B♭ Tpt. 1

B♭ Tpt. 2, 3

F Hrn. 1, 3

F Hrn. 2, 4

Trb. 1, 2

Trb. 3

Bar. Hrn.

Tuba

St. Bass

Perc. I

Perc. II (B.D.)

Perc. III

Milt. Perc.

Timp.

40 (-picc.)

Picc. Fl. 1,2
Ob. 1,2
Bsn. 1,2
Eb Cl.
Bb Cl. 1
Bb Cl. 2,3
Eb Alto Cl.
Bb Bass Cl.
Eb Alto Sax. 1,2
Bb Tenor Sax.
Eb Bar. Sax.
Bb Tpt. 1
Bb Tpt. 2,3
F Hrn. 1,3
F Hrn. 2,4
Trb. 1,2
Trb. 3
Bar. Hrn.
Tuba
St. Bass
Perc. I
Perc. II
Perc. III
Milt. Perc.
Timp.

ALLEGRIAN PORTRAIT

43 44 45 46 47 48

Handwritten annotations: CRES., STRAIGHT MUTE SOLI, CHIMES, B.D. CL. EXM., CELLS

Picc. Fl. 1,2
Ob. 1,2
Bsn. 1,2
Eb Cl.
1
Bb Cl.
2,3
Eb Alto Cl.
Bb Bass Cl.
Eb Alto Sax. 1,2
Bb Tenor Sax.
Eb Bar. Sax.

Rit. A TEMPO

1
Bb Tpt.
2,3
1,3
F Hrn.
2,4
1,2
Trb.
3
Bar. Hrn.
Tuba
St. Bass
I
Perc. II
III
Milt. Perc.
Timp.

Rit. A TEMPO

P. 14
ALLEGHENY PORTRAIT

82

Picc. Fl. 1, 2
 Ob. 1, 2
 Bsn. 1, 2
 Eb Cl.
 Bb Cl. 1
 Bb Cl. 2, 3
 Eb Alto Cl.
 Bb Bass Cl.
 Eb Alto Sax. 1, 2
 Bb Tenor Sax.
 Eb Bar. Sax.

82

Bb Tpt. 1
 Bb Tpt. 2, 3
 F Hrn. 1, 3
 F Hrn. 2, 4
 Trb. 1, 2
 Trb. 3
 Bar. Hrn.
 Tuba
 St. Bass
 Perc. I
 Perc. II
 Perc. III
 Mil. Perc.
 Timp.

P. 15
 ALLEGHENY PORTRAIT

Picc. Fl. 1,2
Ob. 1,2
Bsn. 1,2
Eb Cl.
Bb Cl. 1, 2, 3
Eb Alto Cl.
Bb Bass Cl.
Eb Alto Sax. 1, 2
Bb Tenor Sax.
Eb Bar. Sax.
Bb Tpt. 1, 2, 3
F Hrn. 1, 3, 2, 4
Trb. 1, 2, 3
Bar. Hrn.
Tuba
St. Bass
Perc. I, II, III
Milt. Perc.
Timp.

RIT.
RIT.
SUS CMM
R

91 RUBATO

Picc. Fl. 1,2

Ob. 1,2

Bsn. 1,2

E♭ Cl.

1 B♭ Cl.

2,3 B♭ Cl.

E♭ Alto Cl.

B♭ Bass Cl.

E♭ Alto Sax. 1,2

B♭ Tenor Sax.

E♭ Bar. Sax.

mf *p* *rit.* *f*

CONTRA AL CUE

91 RUBATO

1 B♭ Tpt.

2,3 B♭ Tpt.

1,3 F Horn.

2,4 F Horn.

1,2 Trb.

3 Trb.

Bar. Horn.

Tuba

St. Bass

I Perc.

II Perc.

III Perc.

Milit. Perc.

Timp.

MOEN CUE

f *p* *rit.* *f* *DELAY*

pp *f* *rit.* *f*

P.17 ALLEGHEM RITRATT

100 ANDANTE (♩ = 76)

Picc.
Fl. 1, 2

Ob. 1, 2

Bssn. 1, 2

E♭ Cl.

1
B♭ Cl.

2, 3

E♭ Alto Cl.

B♭ Bass Cl.

E♭ Alto Sax.
1, 2

B♭ Tenor Sax.

E♭ Bar. Sax.

100 ANDANTE (♩ = 76)

1
B♭ Tpt.

2, 3

1, 3
F Hrn.

2, 4

1, 2
Trb.

3

Bar. Hrn.

Tuba

St. Bass

I

Perc. II

III

Milit. Perc.

Timp.

ALLEGRO PORTANTO

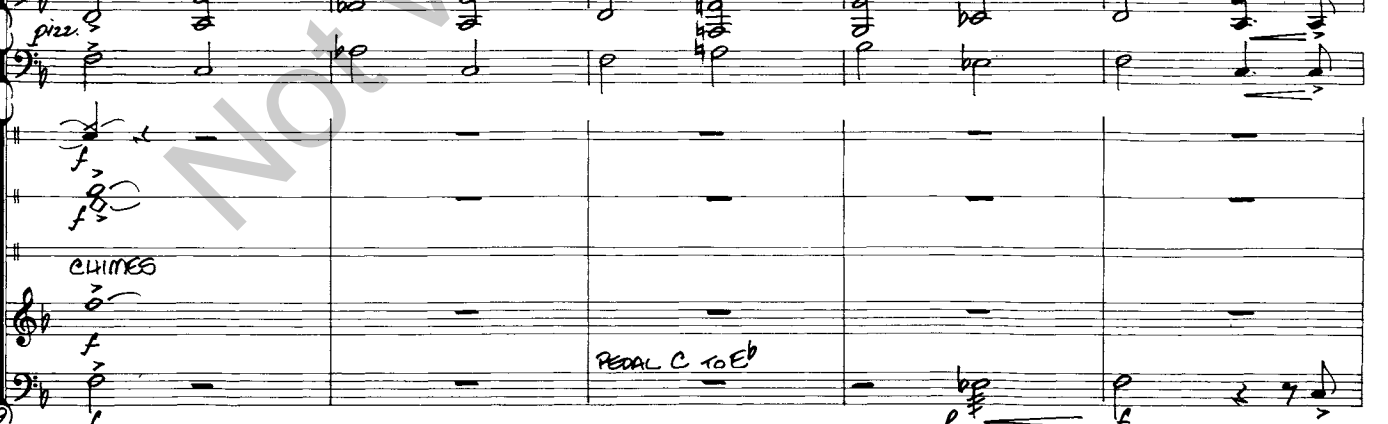
100

101

102

103

104



CHIMES

PEDAL C TO E♭

Picc. Fl. 1, 2
 Ob. 1, 2
 Bssn. 1, 2
 Eb Cl.
 1
 Bb Cl.
 2, 3
 Eb Alto Cl.
 Bb Bass Cl.
 Eb Alto Sax. 1, 2
 Bb Tenor Sax.
 Eb Bar. Sax.
 1
 Bb Tpt.
 2, 3
 1, 3
 F Hrn.
 2, 4
 1, 2
 Trb.
 3
 Bar. Hrn.
 Tuba
 St. Bass
 1
 Perc.
 II
 III
 Milit. Perc.
 Timp.

RIT. 107 MODERATO (♩=60) ACCEL. POCO A POCO
 Acc. Fl. 1 Fl. 2

RIT. 107 MODERATO (♩=60) ACCEL. POCO A POCO

SUS Cym. SN. DR. B.D. CE. Cym. CHIMES
 220) ALLEGRETTI PORTANT
 105 106 107 108 109

115 ALLEGRO VIVO (♩ = 138-144)

Picc. Fl. 1,2
Ob. 1,2
Bsn. 1,2
Eb Cl.
1
Bb Cl.
2,3
Eb Alto Cl.
Bb Bass Cl.
Eb Alto Sax. 1,2
Bb Tenor Sax.
Eb Bar. Sax.

115 ALLEGRO VIVO (♩ = 138-144)

1
Bb Tpt.
2,3
1,3
F Hrn.
2,4
1,2
Trb.
3
Bar. Hrn.
Tuba
St. Bass
1
Perc. II
III
Milt. Perc.
Timp.

Picc. Fl. 1,2

Ob. 1,2

Bssn. 1,2

E♭ Cl.

1

B♭ Cl.

2, 3

E♭ Alto Cl.

B♭ Bass Cl.

E♭ Alto Sax. 1, 2

B♭ Tenor Sax.

E♭ Bar. Sax.

1

B♭ Tpt.

2, 3

1, 3

F Hrn.

2, 4

1, 2

Trb.

3

Bar. Hrn.

Tuba

St. Bass

I

Perc. II

III

Milt. Perc.

Timp.

acc. a1
a2
a3 (2 + 2 + 3)
f

Picc. Fl. 1, 2
 Ob. 1, 2
 Bsn. 1, 2
 Eb Cl.
 1
 Bb Cl.
 2, 3
 Eb Alto Cl.
 Bb Bass Cl.
 Eb Alto Sax. 1, 2
 Bb Tenor Sax.
 Eb Bar. Sax.
 1
 Bb Tpt.
 2, 3
 1, 3
 F Hrn.
 2, 4
 1, 2
 Trb.
 3
 Bar. Hrn.
 Tuba
 St. Bass
pp
f
 I
 Perc. II
 III
 Milt. Perc.
 Timp.

ALLEGHENY PORTRAIT

Picc. Fl. 1,2
 Ob. 1,2
 Bsn. 1,2
 Eb Cl.
 1 Bb Cl.
 2,3
 Eb Alto Cl.
 Bb Bass Cl.
 Eb Alto Sax. 1,2
 Bb Tenor Sax.
 Eb Bar. Sax.
 1 Bb Tpt.
 2,3
 F Hrn. 1,3
 2,4
 Trb. 1,2
 3
 Bar. Hrn.
 Tuba
 St. Bass
 I Perc.
 II
 III
 Milt. Perc.
 Timp.

Handwritten musical notation with dynamics (f, cresc.) and articulation (accents, slurs) across multiple staves.

0.27)
 ALLEGRETTO MODERATO

146

Fl. 1,2
Picc.

Picc.
Fl. 1,2

Ob. 1,2

Bssn. 1,2

E♭ Cl.

1
B♭ Cl.

2,3

E♭ Alto Cl.

B♭ Bass Cl.

E♭ Alto Sax.
1, 2

B♭ Tenor Sax.

E♭ Bar. Sax.

146

1
B♭ Tpt.

2,3

1,3
F Horn.

2,4

1,2
Trb.

3

Bar. Horn.

Tuba

St. Bass

I
Perc.

II

III

Milt. Perc.

Timp.

p. 28
ALLEGRETTI PORTANTO

145

146

147

148

149



Picc. Fl. 1, 2
 Ob. 1, 2
 Bsn. 1, 2
 Eb Cl.
 1 Bb Cl.
 2, 3
 Eb Alto Cl.
 Bb Bass Cl.
 Eb Alto Sax. 1, 2
 Bb Tenor Sax.
 Eb Bar. Sax.
 1 Bb Tpt.
 2, 3
 1, 3 F Hrn.
 2, 4
 1, 2 Trb.
 3
 Bar. Hrn.
 Tuba
 St. Bass
 1 Perc.
 II
 III
 Milit. Perc.
 Timp.

D. 29)
 ALLEGHENY PORCEANT

Picc. Fl. 1,2
 Ob. 1,2
 Bssn. 1,2
 Eb Cl. 1
 Bb Cl. 2,3
 Eb Alto Cl.
 Bb Bass Cl.
 Eb Alto Sax. 1,2
 Bb Tenor Sax.
 Eb Bar. Sax.
 Bb Tpt. 1,2,3
 F Hrn. 1,3,2,4
 Trb. 1,2,3
 Bar. Hrn.
 Tuba
 St. Bass
 Perc. I, II, III
 Milt. Perc.
 Timp.

158
 158
 arco
 gang
 BELLS
 CHIMES

p. 20
 ALLEGRETTO PORTRAIT

Picc. Fl. 1,2
 Ob. 1,2
 Bsn. 1,2
 Eb Cl.
 1 Bb Cl.
 2,3
 Eb Alto Cl.
 Bb Bass Cl.
 Eb Alto Sax. 1,2
 Bb Tenor Sax.
 Eb Bar. Sax.
 1 Bb Tpt.
 2,3
 1,3 F Hrn.
 2,4
 1,2 Trb.
 3
 Bar. Hrn.
 Tuba
 St. Bass
 I Perc.
 II
 III
 Milit. Perc.
 Timp.

Musical score for Allegretto Perpetuo, measures 160-164. The score includes parts for Piccolo Flutes, Oboes, Bassoons, Clarinets, Saxophones, Trumpets, Horns, Trombones, Baritone Horn, Tuba, St. Bass, Percussion, and Military Percussion. The music is in 4/4 time with a key signature of one sharp (F#).

P. 31) ALLEGRETTO PERPETUO

