

ANNANDALE CHRONICLES

Tuba BC in E \flat

Ed Huckeby

“Annandale, 1888”

Maestoso

012-3434-00

[illegible]

11 *The Great Train Wreck*
Allegro con vivo

Allegro con vivo

[11] Allegro con vivo

f *p*

21

21

The 21st measure of the musical score for 'The Rose Tree' is shown. It is a single-measure rest in the bass clef, marked with a mezzo-piano (*mp*) dynamic. The measure is divided into two parts by a double bar line. The first part is in 4/4 time and contains a quarter note G4, an eighth note F#4, and an eighth note E4. The second part is in 6/8 time and contains a quarter note G4, an eighth note F#4, and an eighth note E4. The key signature is one sharp (F#).

29

37

37

mf

The musical score for the bass line of 'The Rose Tree' is written on a single staff in bass clef with a key signature of one sharp (F#). The piece is in common time (C). The notation includes various rhythmic values such as eighth, quarter, and half notes, as well as rests. There are several dynamic markings, including *mf* (mezzo-forte), and articulation marks like accents and slurs. The score is divided into measures by bar lines, with some measures containing repeat signs. The number 37 is written in a box above the staff, indicating the starting point of the excerpt.

45

45

ff

The bass line of 'The Rose Tree' is written in G major (one sharp) and consists of six measures. The first measure is a whole rest in 7/8 time. The second measure is in 4/4 time and contains a quarter note G (with a 'z' below it), an eighth note A, and a quarter rest. The third measure is a whole rest in 3/4 time. The fourth measure is in 4/4 time and contains a quarter note G (with a 'z' below it), an eighth note A, and a quarter rest. The fifth measure is a whole rest in 7/8 time. The sixth measure is in 4/4 time.

Tuba BC in E \flat / p. 2

2 54

mp

62

f

70 *molto rit.*

ff *mf* *dim.*

74 "Clearwater Lake" *Adagio*

p

78 Bs. Cl.

86 *Play*

mp

94 *poco più mosso*

mf

rit. 102 *a tempo*

mp

molto rit.

116 "Bungalow Island" *Moderato*

p *mf*

121

Tuba BC in E \flat / p. 3

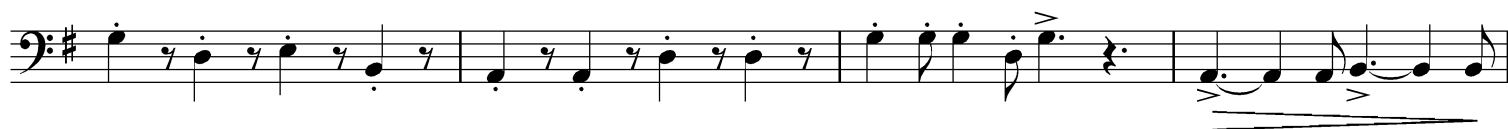
129



133



141



149



153



161

