

# Ouverture Internationale

TUBA BC in E $\flat$

Ed Huckeby

012-3465-00

**Allegro** **2**

*mf*

**12**

*f*

**21**

*mp*

**29**

*cresc.*

**37**

*f*

**46**

*mf*

**50** **Andante**

B. Cl. cue

*dim. e rit.*

*mp*

**58**

**66** *poco piu mosso*

*mf*

TUBA BC in E $\flat$  - p2

74



*a tempo* 82



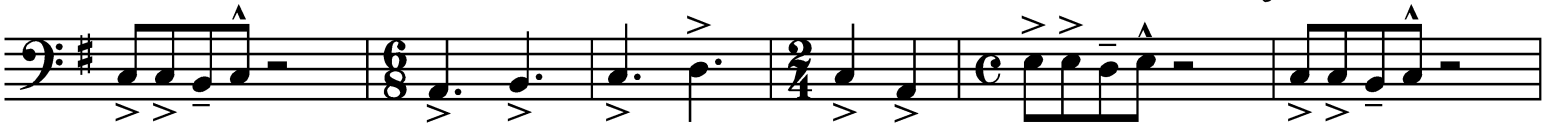
90



98 Allegro 2



109



118



126



*cresc.*

134



143

