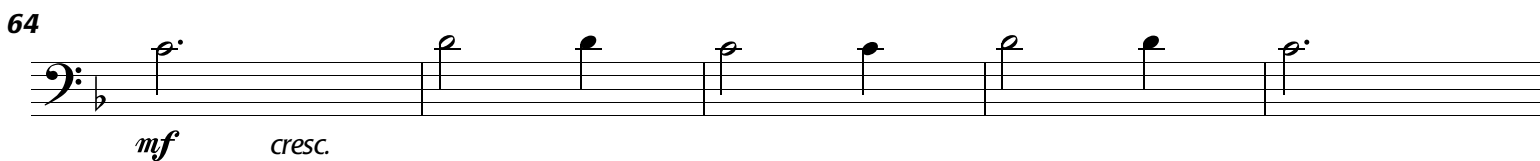
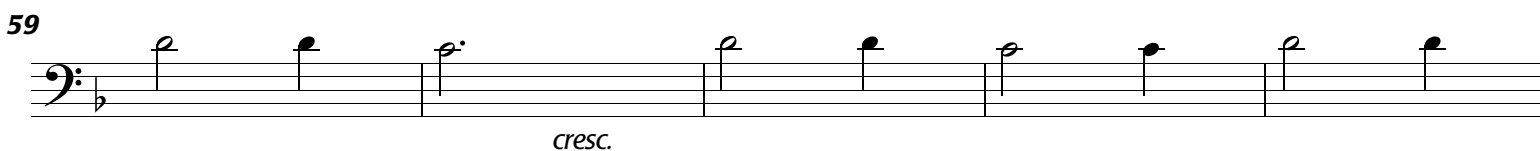
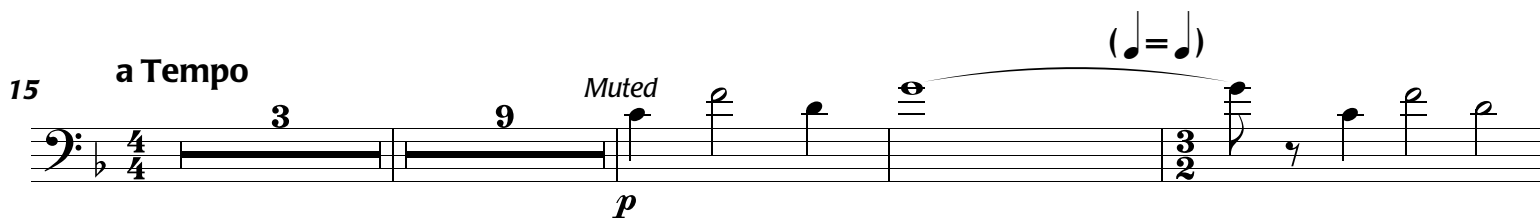
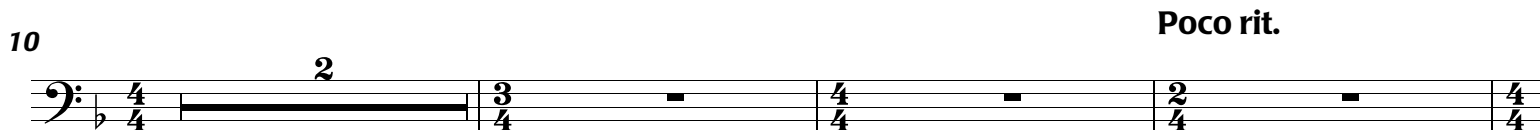
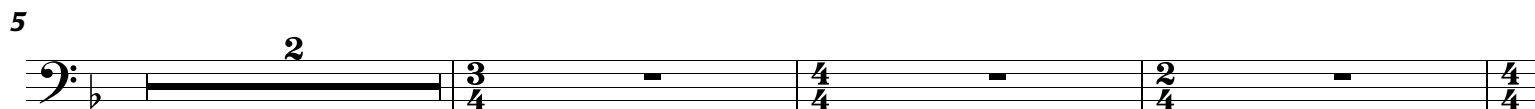
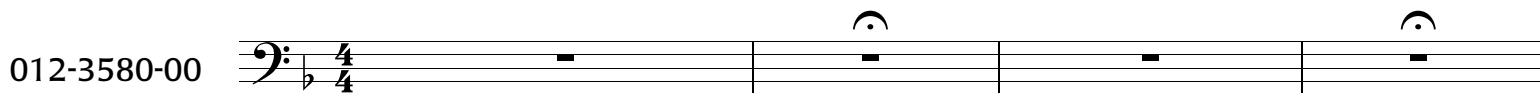


Symphony No. 1, New Day Rising

IV. New Day Rising

Adagio Rubato (♩ = 72)



1st B \flat Trombone (B \flat)

Symphony No. 1, Mvmt. IV

[illegible]

73

73


73

77

81 Ω , ♯ ♯ ♯ ♯ Ω **Ritard** ♯

85 **a Tempo**

The musical score for measures 85-94 is written in bass clef with a key signature of one flat (B-flat). The tempo marking 'a Tempo' is placed above the staff at measure 85. The notation consists of eighth notes, each preceded by an accent (>). The notes are: B-flat (85), D-flat (86), E-flat (87), F (88), G (89), A-flat (90), B-flat (91), C (92), D-flat (93), and E-flat (94). The measure 94 note is followed by a repeat sign.

89 

93

ff *dim.*

97 *mp* *dim.* **Rit.** **Slowly** *p* **3**