

# VISIONS OF AUSTRALIA

Tuba BC in E $\flat$

Graham Lloyd

012-3688-00

Aboriginal 'Dreamtime'  $\text{♩} = 108$  6

1770 – Australian coast is discovered by Captain Cook (British Navy)

8 Sailing into Botany Bay 6

*p* *cresc.*

1838 – A township is established

*poco accel.* 21  $\text{♩} = 112$

*f* *mf* *div.*

38 Bs. Cl. cue *mp* *f* *div. b.*

46 *p* 3 54 *mf*

62 *f*

70 *mf* *div.*

78 *div.* *f*

86 *div.* *ff* *Molto Allegro* ( $\text{♩} = 164$ ) 6

96

*mf*

104

*f*

112

*div.**f**Electricity and telephones introduced*

122

(♩ = ♩)

10

132

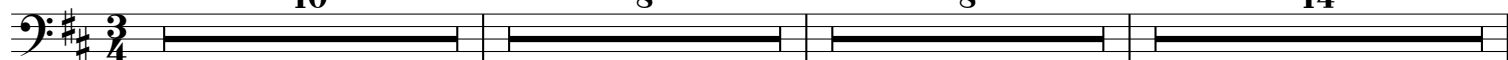
8

140

8

148

14



162

8

170

2

*mp cresc.**f*

178

*Two World Wars**div.*

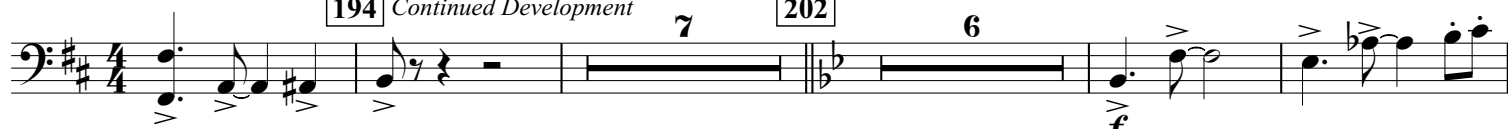
194

*Continued Development*

7

202

6

*f**f*

Tuba BC in E $\flat$  / p. 3

222 *div.*

*f*

*sub. p* *molto cresc.* *f* *cresc.* *ff*

239 *A Time for reflection* *Bsn., Bs. Cl. cue* *p* *dim.*

*Play* *p* *The Future* 248 *♩ = 120* 2 3 *f*

*div.*

260

268 *mp*

276

290 *dim. poco a poco* *ff*