

# VALLEY OF THE KINGS

Tuba BC in E $\flat$

Rob Grice  
(ASCAP)

012-3772-00

Maestoso ( $\text{♩} = 98$ )

*f*

9

*ff*

*poco rit.*

*fff*

17 Allegro ( $\text{♩} = 138$ )

2

*mp* *mp* *mf* *mp*

27

*f*

35

*mf* *f*

47

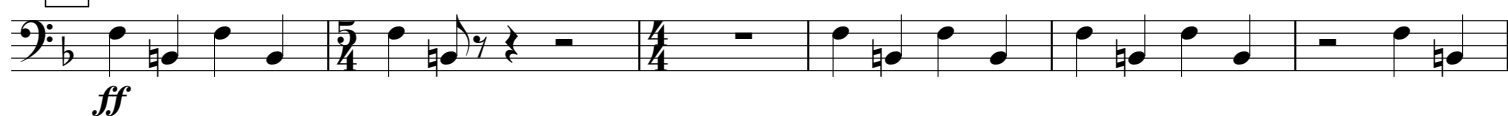
*mf* *mp*

Tuba BC in E $\flat$  / p. 2

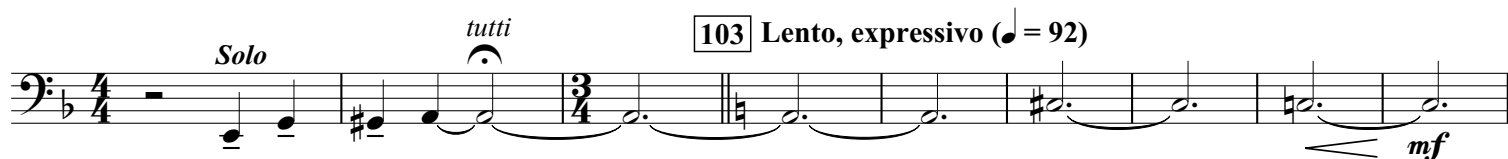
54



59



81



### Tuba BC in E<sup>b</sup> / p. 3

**125** *con moto*

*rit.*

**135** Con passione (♩ = 85)

*rit.*

2

The musical notation for the bass line of 'The Rose Tree' is shown on a single staff. It begins with a treble clef and a key signature of one sharp (F#). The melody consists of eighth and quarter notes, with some measures containing beamed eighth notes. The dynamics are marked as *mf* (mezzo-forte), *ff* (fortissimo), *mf*, and *mp* (mezzo-piano). The piece concludes with a double bar line and a repeat sign.

**151** Allegro (♩ = 138)

[illegible]

The bass line of 'The Rose Tree' is written on a single staff. It begins with a treble clef and a key signature of one flat (B-flat). The melody consists of a series of eighth and quarter notes, with some notes beamed together. The dynamics are marked as *ff* (fortissimo), *mp* (mezzo-piano), and *f* (forte). The piece concludes with a final cadence.

166

The bass line of 'The Rose Tree' is written on a single staff in bass clef. It consists of six measures. The first measure has an accent (>) over the first eighth note. The melody is: G2 (quarter), A2 (quarter), B2 (quarter), A2 (quarter), G2 (quarter), F2 (quarter), E2 (quarter), D2 (half). The notes are: G2, A2, B2, A2, G2, F2, E2, D2.

176

[illegible]

The bass line of 'The Rose Tree' is written on a single staff. It begins with a bass clef and a key signature of one flat (B-flat). The melody consists of eighth and sixteenth notes, often beamed together. There are several slurs and accents (marked with a 'v' or 'z') throughout the piece. The notation is presented in a clean, black-and-white format.

183

3

193

4

[illegible]

*div.*

The musical score for 'The Rose Tree' is presented in two systems. The first system consists of a single staff in bass clef, featuring a half note G2, a half note G2, and a triplet of eighth notes (F#2, E2, D2) marked with accents and a forte (ff) dynamic. The second system consists of two staves in bass clef. The upper staff contains a triplet of eighth notes (G2, F#2, E2) marked with accents and a forte (ff) dynamic, followed by a quarter rest. The lower staff contains a triplet of eighth notes (G2, F#2, E2) marked with accents and a forte (ff) dynamic, followed by a quarter rest. The piece concludes with a double bar line.