

Commissioned by the Band Directors of the Texas Music Educators Association,
Region II, North Zone, for the 2007 4A All-District Band, Wichita Falls, Texas

SOUTHWEST SUMMER

(American Landscape #3: Desert Dawn, Paseo Del Rio and Longhorns)

Tuba BC in E \flat

Robert W. Smith (ASCAP)

012-3872-00

Desert Dawn
With Energy ($\text{♩} = 120$)
4 Freely ($\text{♩} = 60$)
5

Paseo Del Rio
10 Gently ($\text{♩} = 72$)
8
18 With Warmth
rit.
rit. 3

31 With Motion ($\text{♩} = 132$)
2
41
sim.
mf

54
mp
mf
f

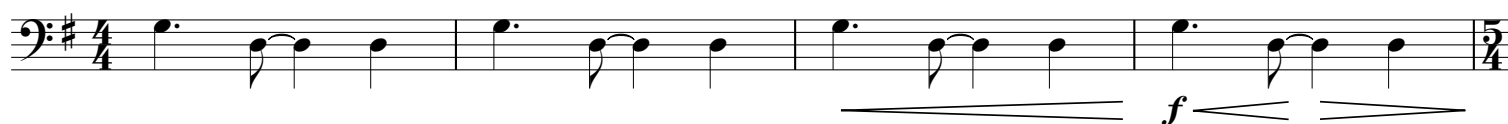
62
f
2

Tuba BC in E \flat / p. 2

70



78



89 Fading into Distance

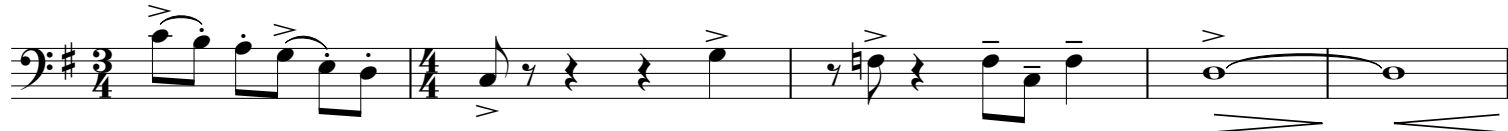
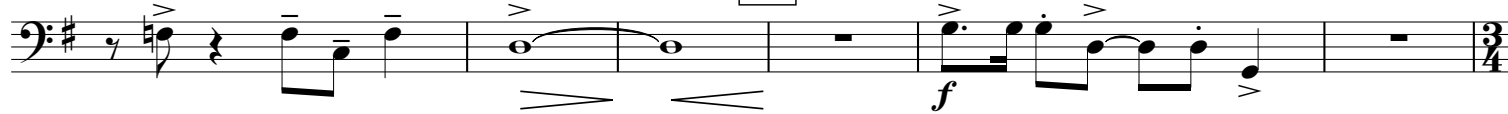


Longhorns

98 With Energy (♩ = 132)



106



114



118



Tuba BC in E \flat / p. 3

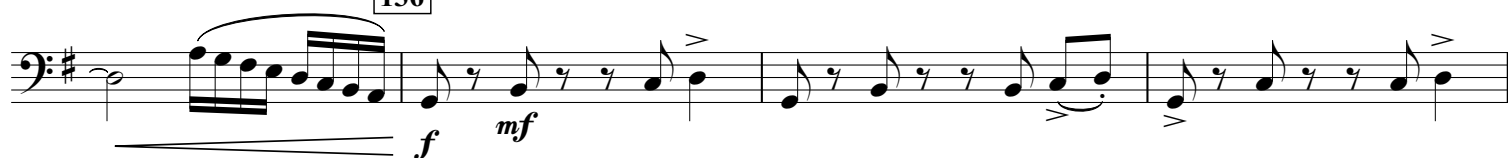
122



126



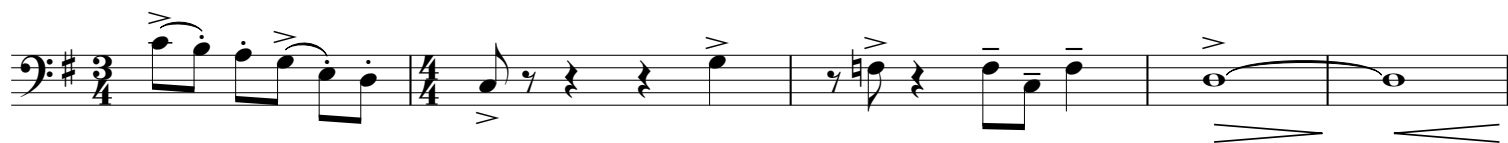
136



144



149



157 Faster (♩ = 144+)



163

