

Dedicated to the Osceola Fundamental High School Symphonic Band, Seminole, Florida; Donald Edwards, Director

# EVEREST: THE FORBIDDEN JOURNEY

Tuba BC in E $\flat$

Rob Romeyn (ASCAP)

012-4108-00

**Boldly**  $\text{♩} = 76$

*ff* *mf*

**11** 8

*ff* *p*

**19** Sustained

*mp*

*rall.* *a tempo* **29**

*p* *f* *mf* *ff*

*rall.* **39** Lively  $\text{♩} = 160$

*mp sub.* *p* *ff*

**47** 3 3

*ff* *ff*

**57** 9 **66**

*f*

**75**

*mp*

**84**

*f*

*mp* *p*

© 2012 Birch Island Music Press (ASCAP), P.O. Box 680, Oskaloosa, IA 52577, U.S.A.

International copyright secured. All rights reserved. Printed in U.S.A.

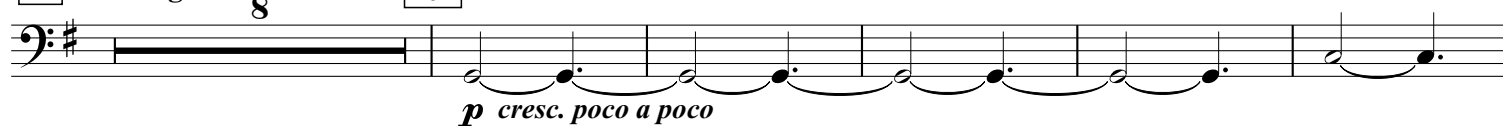
WARNING! This composition is protected by copyright law. To copy or reproduce it by any method is an infringement of the copyright law.

Tuba BC in E $\flat$  / p. 2

93 Building

8

101



110 Aggressively



114



124

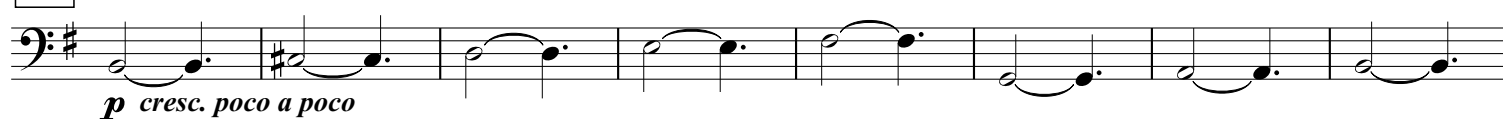


132

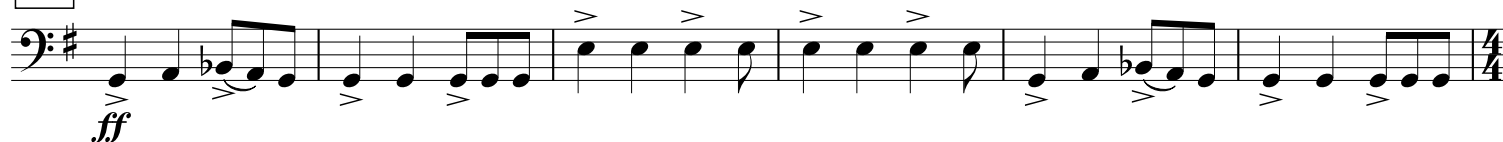
4



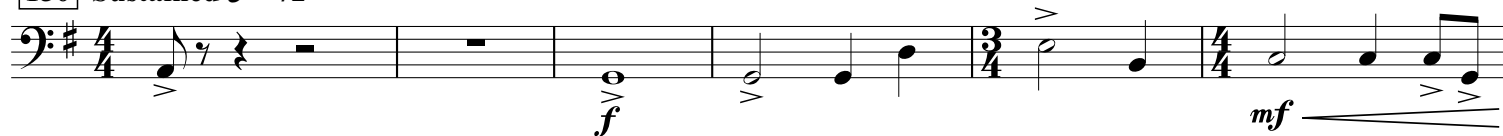
136



144



150 Sustained ♩ = 72



160



rall.

166 Boldly ♩ = 76

