

Dedicated to Nancy Youse for her 30 years of  
service and devotion to the teaching profession

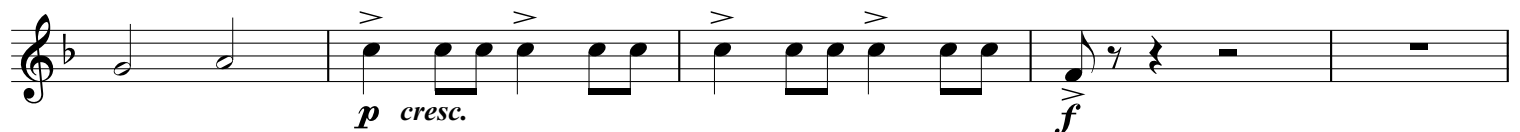
# ABOVE AND BEYOND

*A Triumphant Fanfare for Band*

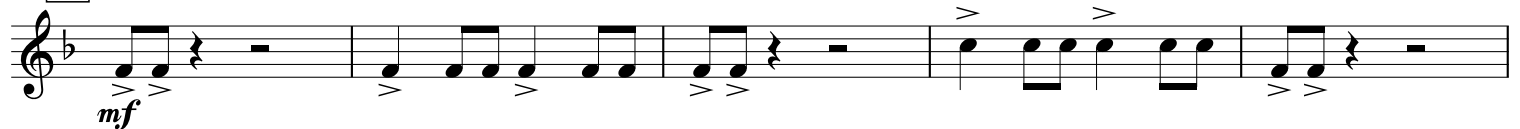
Tuba TC in B $\flat$

James Swearingen (ASCAP)

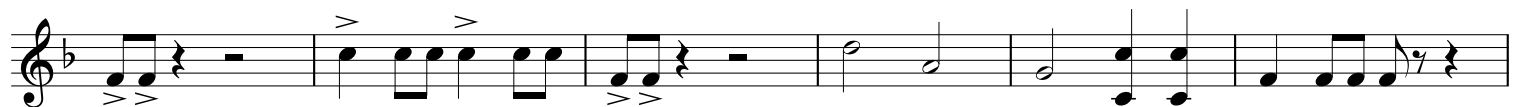
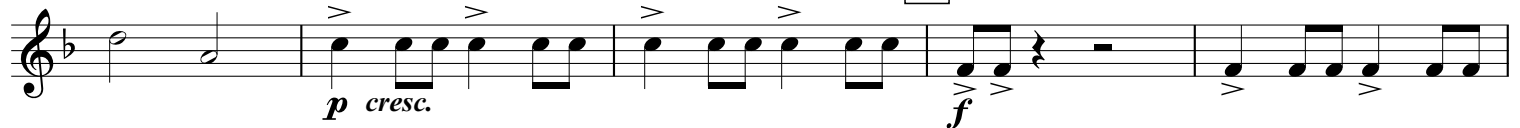
**Bold and Powerful** ♩ = 112



**12 Heroic**



**20**



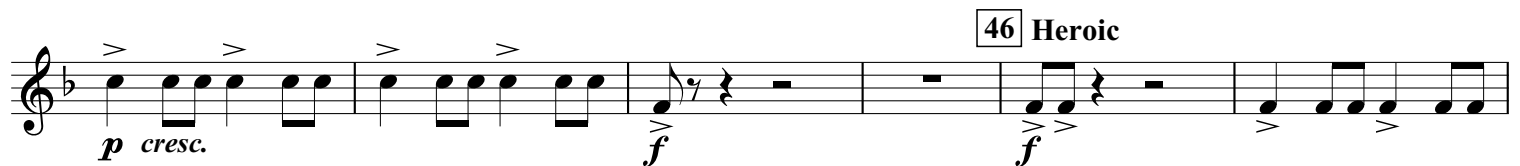
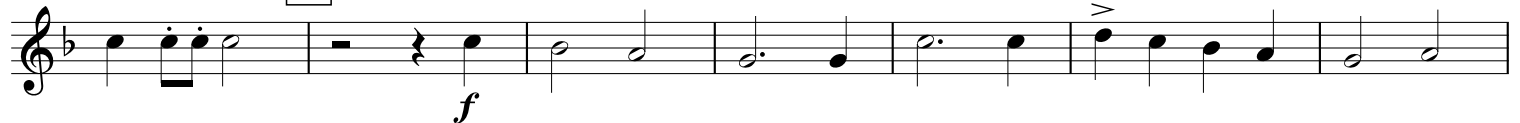
**28 Very Smooth**

Bass Cl. cue



*cresc.*

**36 Bold and Powerful**



**46 Heroic**



**54**

